



Pick, place & live anywhere

PRODUCT CATALOG



INTRODUCTION TO CAADUS



Caadus or California ADU's, is a first fully prefabricated, integrated and equipped house in the world. Ready to live without construction.

A home is an essential human right

Our founders' experience in the construction industry has exposed them to the current issues plaguing the housing market; and it is with a focus on providing alternative housing options, that Caadus was born. The core team spent decades meticulously analyzing the industry, and have been able to identify the key factors that **set** our designs apart from the competition. We have focused on sustainability, technological innovation and space optimization in order to produce the modern homes available today. The goal has been to change the industry, and in doing so we are now making a higher standard of living accessible to everyone.

A larger home does not mean greater utility

Caadus is able to produce low-cost, fully functional homes in a compact size that allow for better space utilization and lifestyle optimization than a traditional home design. Our goal of accessibility on a global scale has influenced our design and has made us innovate to produce a home that satisfies all of our client's needs. Whether it is a single occupant, or an entire family, we have a solution for everyone.

A portable home ready for the stars

As Caadus looks to the future, we know that mobility is key. For now that means making our homes portable and movable anywhere in the world. We are also planning for an even greater need for mobility as we explore further into outer space. Our passion for building on the edges of what is possible will continue to push us to develop options and products that will be able to travel even beyond planet Earth. Caadus is truly aiming for the stars as we continue to evolve and seek solutions to tomorrow's problems, while addressing the issues of today.

BENEFITS



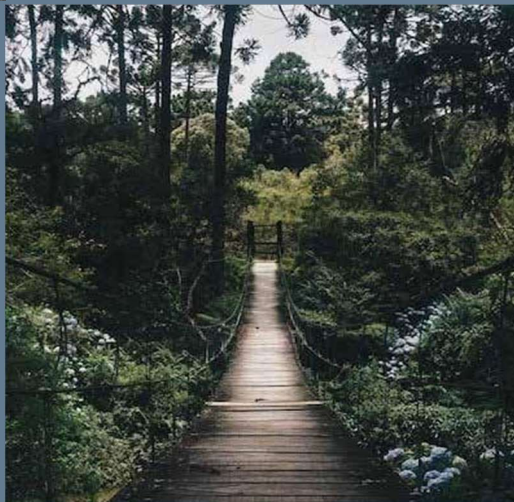
Your Home Wherever Life Takes You

Moving to another city? Leave the good memories behind but not your home. Save yourself from all the hassle of moving out of your old home and moving into a new one. Even as life constantly changes, you will have a home to stay in.

Environmental Friendly

Play your part towards a sustainable future. Living Tiny means fewer carbon emission. Implementation of green-energy sources helps reducing your carbon footprint to minimum.

Live for yourself and the earth.



Free of Loans

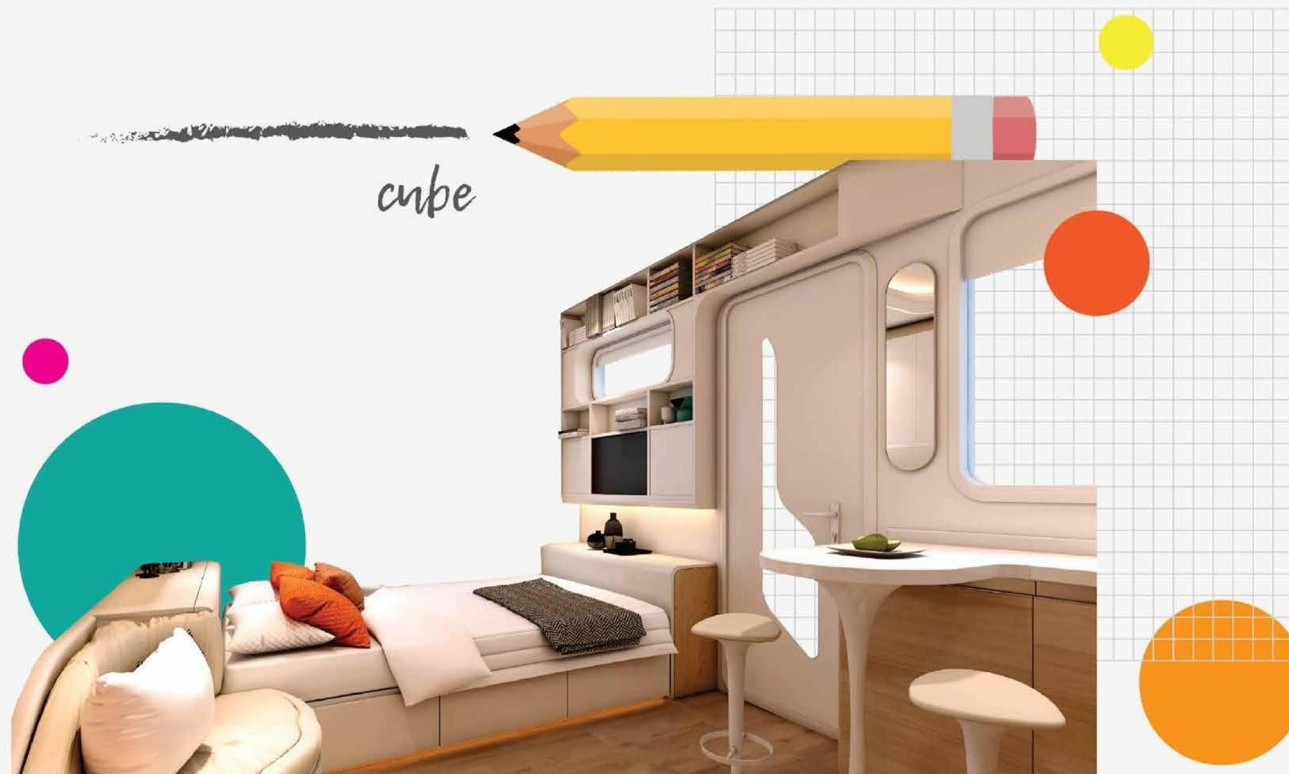
Own a compact, complete, comfortable and clever Tiny House with a friendly budget. Save the money on bills and live free of mortgage pressure.

BENEFITS

SAFETY

Our products provide a safe living in all sorts of environment. All products meet the requirement for fortification against earthquake at Level-7 intensity and typhoons at Level-10 intensity. Not to mention, the materials used are toxic-free, maintenance friendly, and high resistance against humid weather.

Caadus products are made with materials that are high in resistant against burning temperature. Tempered glass with aluminum alloy framed windows, and rock-wool fibers are used in our products. Both materials can withstand up to 1000°C burning, thus making it a Grade A fireproofing product.



COMFORT

Compact but spacious is what our product aims. Our designers utilized every inch of the space, making sure that no space is wasted with a modern aesthetic touch making our product look timeless.

The wall layers are covered with rockwool insulation fibers providing sound-proofing levels similar to hotels. Furthermore, our tempered glass windows are tinted, ensuring that you can enjoy privacy.

Our products are 100% prefabricated and come fully furnished to make the moving-in process convenient.



LAYOUT

Bearing-less walls in construction allowed us to increase the interior of our products by 15% and above having the walls half the thickness of a traditionally constructed house, to give you an experience of space. Your home may be compact but it is functionally complete.

Fully- equipped with home appliances such as washing machines, refrigerators, tv, air conditioning, stoves and even water heaters to meet your daily needs. Lightings and plumbing are entirely functional, and no further installation is needed.

ECOLOGY

Our part towards a sustainable future. Our philosophy reflects in the way we equip, design, and produce our houses. The whole manufacturing process is conducted inside the factory - without construction harm for the environment. 90 % of construction materials are recyclable. Besides, foundation-free construction won't increase environment fragmentation.

Because we believe that everything starts at home, we equip our houses to make a living in them clearly environmental-friendly. We enable people to lead a sustainable lifestyle without additional effort. Small size, high isolation system, and built-in green energy sources make a house almost independent from external energy sources.



90% of environment-friendly materials



Green construction, only requiring 1% of the water necessary for traditional construction



Building energy efficiency above 85%



90% of the materials used in our construction process are recyclable



0.5t standard coal saved



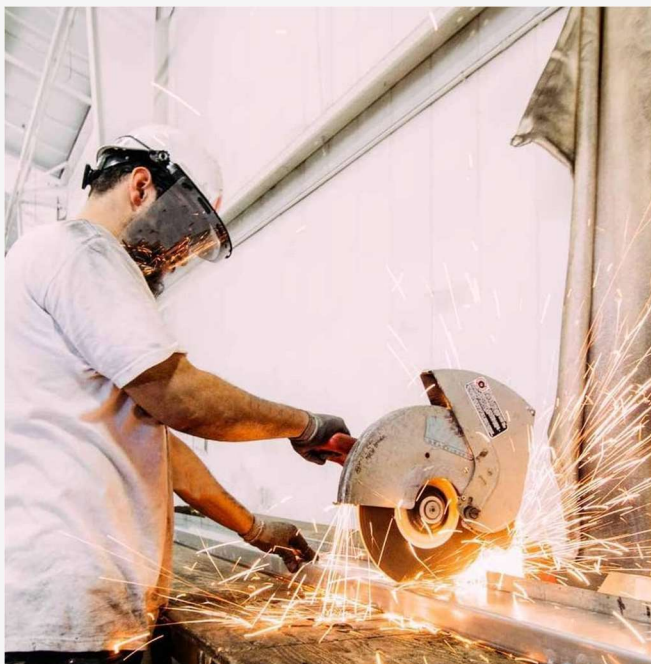
An estimation of 6.8m³ concrete saved



1.2t CO₂ emission reduced



An estimation of 9.9m³ brick saved



QUALITY CONTROL

A controlled construction process to create a quality product. This will fasten the production and will not cause downtime due to material shortages or weather as compared with on-site construction.

PRACTICAL LAYOUT DESIGN

Highly functional interior design with blend-in furniture where stylish designs and ergonomic forms meet to provide comfort. Beneficial to the occupants health thereby improving your quality of life.



GLOBAL COMMUNITY

Forming a new concept of borderless living community through Caadus user's networks globally. Sharing the latest updates in the community forum assisting our users anytime, anywhere with after sales service and support.



F E A T U R E S

STUNNING EXTERIORS



The simplicity yet boldness of this exterior design creates perfect harmony and a stunning outlook.

AESTHETIC INTERIORS



Designed to break through traditional space allocation and with the addition of futuristic elements to enlighten your living space.

INGENIOUS CONCEPTS



One Living Room
One Bed Room
One Rest Room



One Living Room
One Bed Room
One Rest Room



One Living Room
Two Bed Room
One Rest Room



One Living Room
Two Bed Room
One Rest Room



One Living Room
Three Bed Room
One Rest Room



One Living Room
Three Bed Room
One Rest Room



Four Bed Room
One Rest Room



Customized Expandable
Container Office



Multiple design options offer versatile living spaces to meet your interests and desires.

M A T E R I A L S



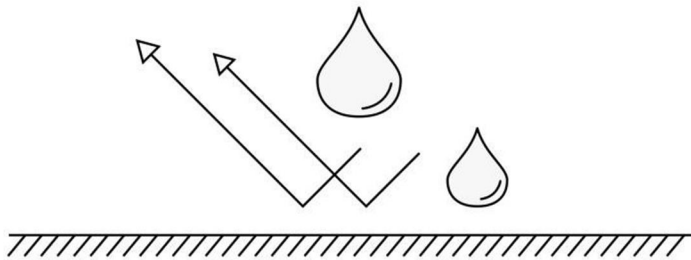
STEEL STRUCTURE

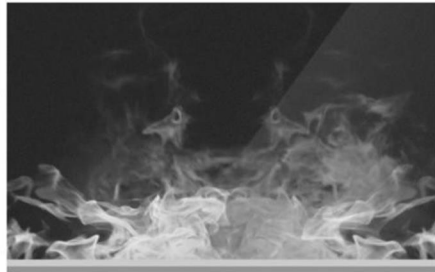
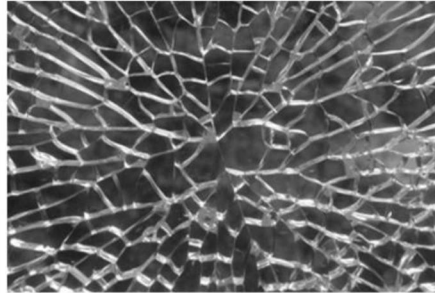
Our products feature a steel structure as the base of the foundation. Steel is a durable yet flexible material in construction. Currently, most of our product structure is made from light gauge steel framings. The petite size of our products does not require heavy-duty steel; thus, it allows our products to be lighter, moving-friendly, rapid production, and flexibility in the structure design.

Our steel frames are galvanized to make sure that it can withstand high humidity and heaty environments. The galvanized coating may endure up to 15 years and above being rust-free under normal circumstances.

STEEL GALVANIZING

All steels used in our products went through a process called galvanizing. Galvanized steel ensures no moisture would puncture the material body making it humid and moisture resistant.





Corrosion
Resistant



Fire
Resistant



Scratch
Resistant



Eco-
Friendly



Humid
Resistant

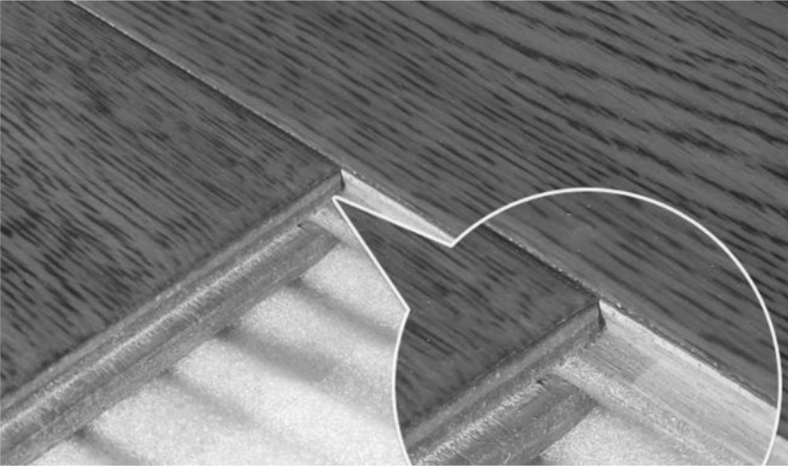


Impact
Resistant

DROP-LOCK FLOOR PANELS & HUMID PROOF PAD

Drop-lock floor uses a lock socket between two panels; thus it is called “drop-lock,” having no seams in between panels, it enables to achieve resistant against humid and vapor and maintain its shape. During installation, this material does not require any form of nailing, glue, or structure application. It may be directly installed on the surface thus it is both time and energy-efficient, it can also be removed and reuse; thus, it is very recyclable and budget-friendly.

Humid proof pad, on the other hand, allows moisture to escape and ventilate the layers in between our floor structure. It is the barrier that protects our floor panels from getting moisture trap and corrosion.



Eco-Friendly



Fire Resistant



Flexible Design



Friction Resistant



Humid Resistant



Corrosion Resistant



Non-slip



Silent

PRODUCT AND PRICE LIST

TERMS & CONDITION

- Caadus reserve the rights to amend the terms & condition without prior notice
- Price Validity : 2023
- Delivery charges may apply depending on location



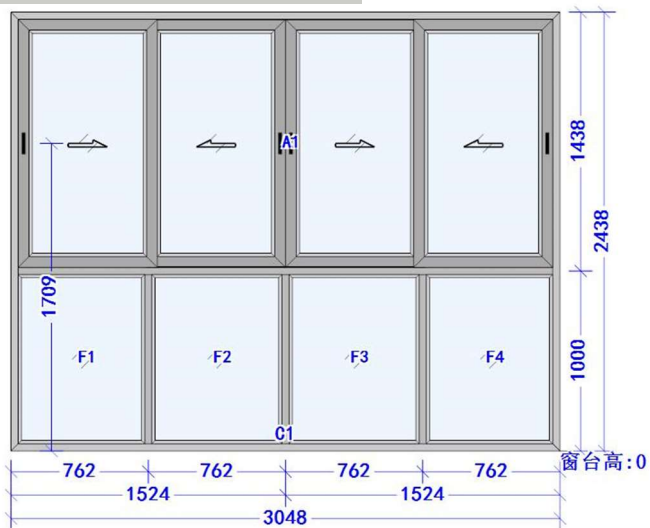
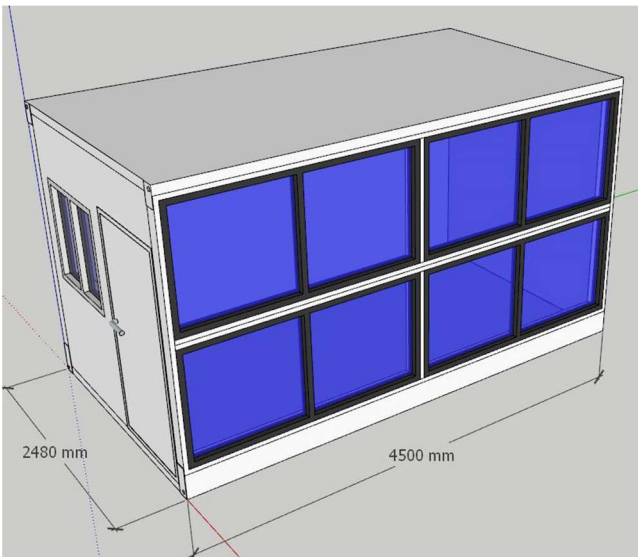
Collapsible Container Unit

PRICE	\$ 4,999
Brand Name	Caadus
House Style	Modular
Quantity	1
Payment Term	Cash or Check
Availability	In stock
Size	200 Square feet
Wall panel	Sandwich panel
Window	Sliding PVC profiled windows
Door	Steel door with dimension
Electricity	Light, Switch, Socket, Distribution box
Painting	Automatic galvanizing and baking spray paint molding
Use	Office, House, Shop, Warehouse, Workshop, Hotel, Kiosk, Booth Office



Small Container Unit

PRICE	\$ 4,999
Brand Name	Caadus
House Style	Modular
Quantity	1
Payment Term	Cash or Check
Availability	In stock
Size	19.52 ft X 9.84 ft X 9.19 ft [approx]
Wall panel	Sandwich panel
Window	Sliding PVC profiled windows
Door	Steel door with dimension
Electricity	Light, Switch, Socket, Distribution box
Painting	Automatic galvanizing and baking spray paint molding
Use	House, Shop, Warehouse, Workshop, Hotel, Kiosk, Booth Office



Office Studio Unit

PRICE	\$ 7,499
Brand Name	Caadus
House Style	Modular
Quantity	1
Payment Term	Cash or Check
Availability	In stock
Size	119 Square feet
Wall panel	Sandwich panel, Glass panel
Window	Sliding PVC profiled windows
Door	Steel door with dimension
Electricity	Light, Switch, Socket, Distribution box
Painting	Automatic galvanizing and baking spray paint molding
Use	Office, House, Shop, Warehouse, Workshop, Hotel etc.



Glass Container Luxury Unit

PRICE	\$ 7,499
Brand Name	Caadus
House Style	Modular
Quantity	1
Payment Term	Cash or Check
Availability	In stock
Size	14.7 ft X 7.1 ft X 7.5 ft [approx]
Wall panel	Sandwich panel, Glass panel
Window	Sliding PVC profiled windows
Door	Steel door with dimension
Electricity	Light, Switch, Socket, Distribution box
Painting	Automatic galvanizing and baking spray paint molding
Use	Office, House, Shop, Warehouse, Workshop, Hotel, Kiosk, Booth Office



Glass Wall Container Unit

PRICE	\$ 9,999
Brand Name	Caadus
House Style	Modular
Quantity	1
Payment Term	Cash or Check
Availability	In stock
Size	19.52 ft X 9.84 ft X 9.19 ft [approx]
Wall panel	Sandwich panel, Glass panel
Window	Sliding PVC profiled windows
Door	Steel door with dimension
Electricity	Light, Switch, Socket, Distribution box
Painting	Automatic galvanizing and baking spray paint molding
Use	House, Shop, Warehouse, Workshop, Hotel etc.



Expandable Container Unit

PRICE **\$ 16,999**

Brand Name	Caadus
House Style	Modular
Quantity	1
Payment Term	Cash or Check
Availability	In stock
Size	19.5 ft X 19.5 ft [approx]
Wall panel	Sandwich panel
Window	Sliding PVC profiled windows
Door	Steel door with dimension
Electricity	Light, Switch, Socket, Distribution box
Painting	Automatic galvanizing and baking spray paint molding
Use	House, Shop, Warehouse, Workshop, Hotel etc



Food Catering Truck



PRICE	\$ 19,999
Brand Name	Caadus
Style	Modular
Quantity	1
Payment Term	Cash or Check
Availability	In stock
Size	16.5 ft X 7 ft [approx]
Door	Steel door with dimension
Electricity	Light, Switch, Socket, Distribution box
Use	Food Catering, Shop etc



4 Stall Toilet Trailer

PRICE	\$ 19,999
Brand Name	Caadus
Style	Modular
Quantity	1
Payment Term	Cash or Check
Availability	In stock
Door	Steel door with dimension
Electricity	Light, Switch, Socket, Distribution box
Painting	Automatic galvanizing and baking spray paint molding
Use	Outdoor Toilet



Bathroom

PRICE	\$ 2,499
Brand Name	Caadus
Style	Modular
Quantity	1
Payment Term	Cash or Check
Availability	In stock
Wall panel	Sandwich panel
Window	Sliding PVC profiled windows
Door	Steel door with dimension
Electricity	Light, Switch, Socket, Distribution box
Painting	Automatic galvanizing and baking spray paint molding
Use	Outdoor / Construction Site Bathroom

For more information visit www.caadus.com
and feel free to contact us at

sales@caadus.com



United States

California ADUs

Lake Elsinore, 92530 CA, US



+1 562 965 5333

© All Rights Reserved | Caadus

The Company reserves the right to
change these terms and conditions at
any time without prior notice

www.caadus.com